

Let's recap

How many different ways can you make this sound?



Did you manage to get them all?

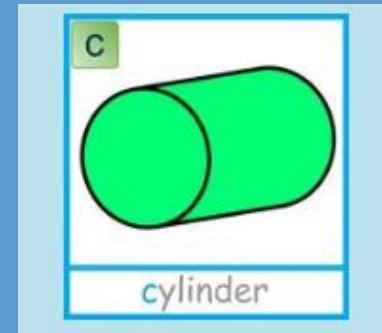
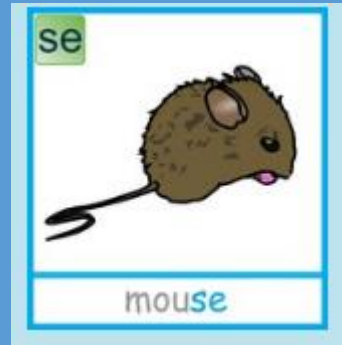
s

ss

se

st

c



# /s/ Spelt 'c'

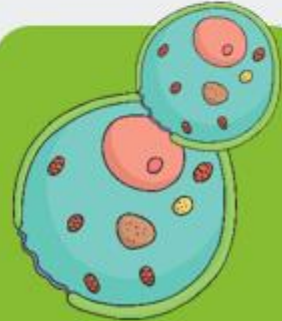
We have learnt that the /s/ sound can be spelt with 's' and 'ss' but the /s/ sound can also be made with a 'c', **if it comes before the letters e, i and y.**



race



ice



cell



city



fancy



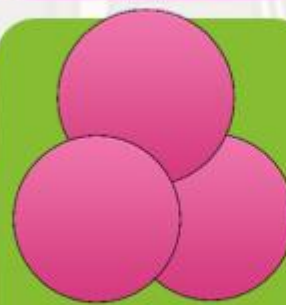
face



space



bicycle



circle



spicy

Read the words ...

The /s/ Sound Spelt Using 'c'

race

face

ice

space

cell

bicycle

city

circle

fancy

spicy

Now try this word search

### The /s/ Sound Spelt Using 'c'

b m n o i c e h e b g u  
i k p z q d r s p i c y  
c b c a v r g e r b m r  
y u e n h i e c i t y g  
c i l w b t d w g b u r  
l e l t f a c e g r h d  
e e p k l n f b i s y t  
k g r b r a r b r p y w  
t m c i r c l e o a n g  
e r f w a d f a n c y g  
c n o w r j d g e e m n  
r a c e a s d f a r v g

race

city

space

spicy

ice

fancy

bicycle

cell

face

circle



Put the words into a sentences

Write them on a whiteboard