

This term we will be exploring the Geography topic – What are the main features of the UK? Your home learning grid below includes exciting learning opportunities to complement what you will be doing in class. You can upload your home learning activities on to [Seesaw](#). You should change your Reading book regularly and upload a picture onto Seesaw each time you change your book. Please see more information [here](#). **You are expected to complete the Every Week box weekly and a minimum of any 3 other activities this half**

### Every Week

**Reading (10 minutes a day) – Remember to upload your Reading book onto Seesaw and comment on the post!**

**Spellings – Practise your weekly Spellings at home, you will find them on EdShed.**

**Times Tables Rock Stars – Login and practise at home**

### Spanish



Click [here](#) to access a number of great online games linked to the Spanish lesson that will be covered during Autumn 2.

### Get Active

Explore lots of our favourite brain breaks on GoNoodle. Get Moving by clicking on the image below.




### History & Geography

Visit the Visit Manchester [website](#) and research topics that interest you. You may find other websites, books, news articles – please bring them in to share with us! Why not plan a trip?




### Writing

Our current literacy unit is called The Abandoned City. Why not have a go at performing the story map we created? Scan the QR code for an example. Maybe write your own version or a setting description of your own city in the future.




### Topic Vocabulary

Find the definition of the following words:

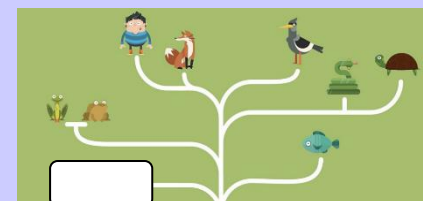
**Geography, locate, country, county, survey, population, landlocked, map, aerial**

### Speaking and Listening

Click [here](#) and learn the lyrics to our Sing Up song for this half term 'Let Love Shine Through'.




### Science




Head here to [BBC Bitesize](#) to learn about classification. What can you find out about vertebrates and invertebrates?

### Maths Genius

Login to Manga High and complete the activities set by your class teacher! Please see your class if you've misplaced your login details.



### Get Creative

Create a Manchester skyline or a Manchester landmark using any materials you can find at home!



### ICT Whizz



This term, we will be creating our own music using Garageband. Can you have a go at exploring this app at home? Why not listen to some famous Manchester music to inspire you?

<https://www.youtube.com/watch?v=sYffFEIAzdE>

<https://www.youtube.com/watch?v=6HPHrmVa9Jw>

**Challenge:** If Manchester United Old Trafford stadium and Manchester City Etihad Stadium are at full capacity, how many people are there altogether in the stadiums?

